

Historical and Archaeological Context of Worcester Lane Sites Referenced in the Draft Black Country Plan Released 25th June 2021

by

K James BSc(Hons), MSc, PhD, FIAP

This brief note covers sites designated as DUH206, DUH207 and DUH209 in the Draft Plan (see Figure 1 below). DUH209 seems to extend some distance further south than the 'Call for Sites' submission 10050 (see Figure 2).

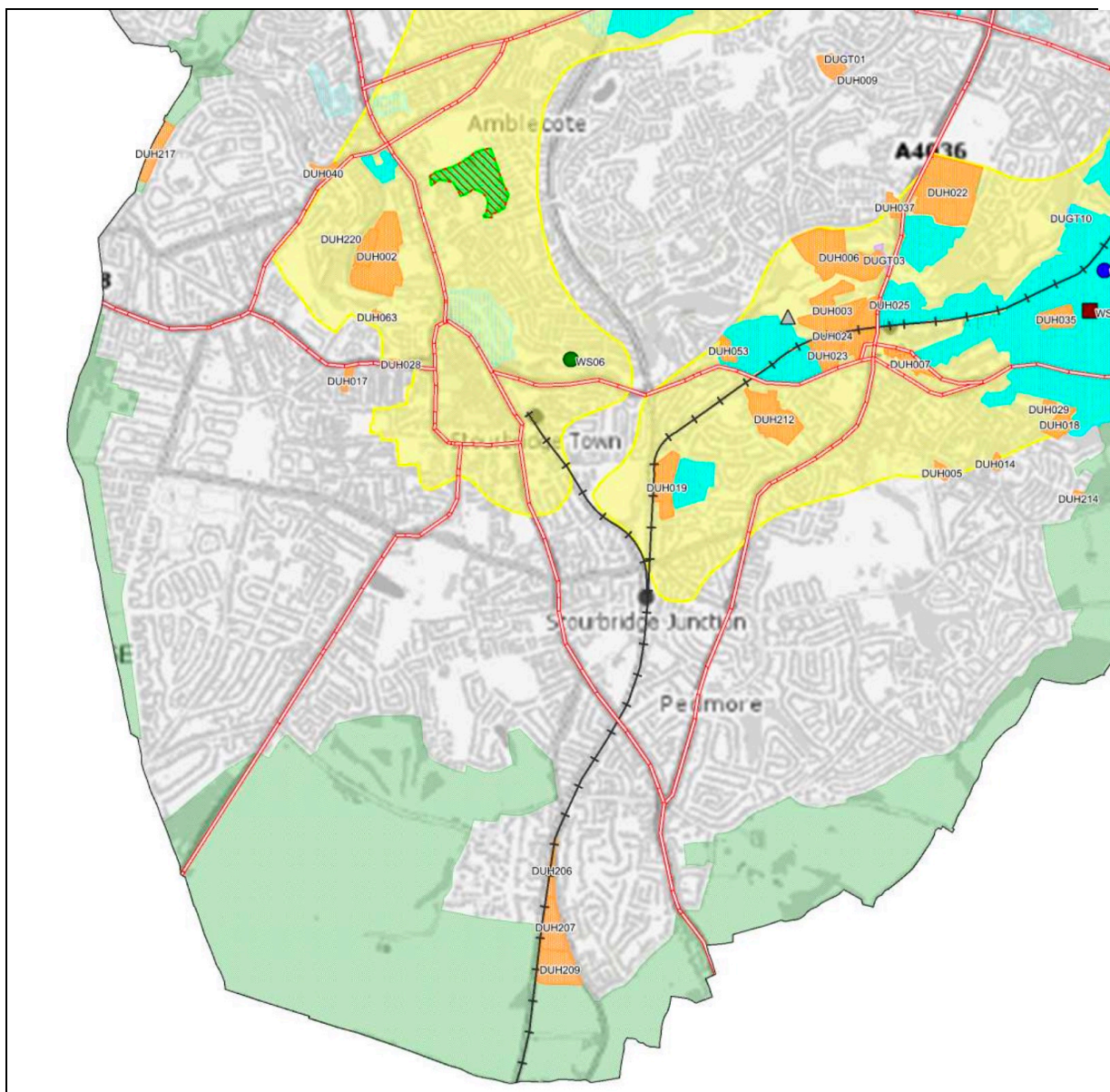


Fig 1. Extract from Policies Map (Appendix 1) of the Draft Black Country Plan

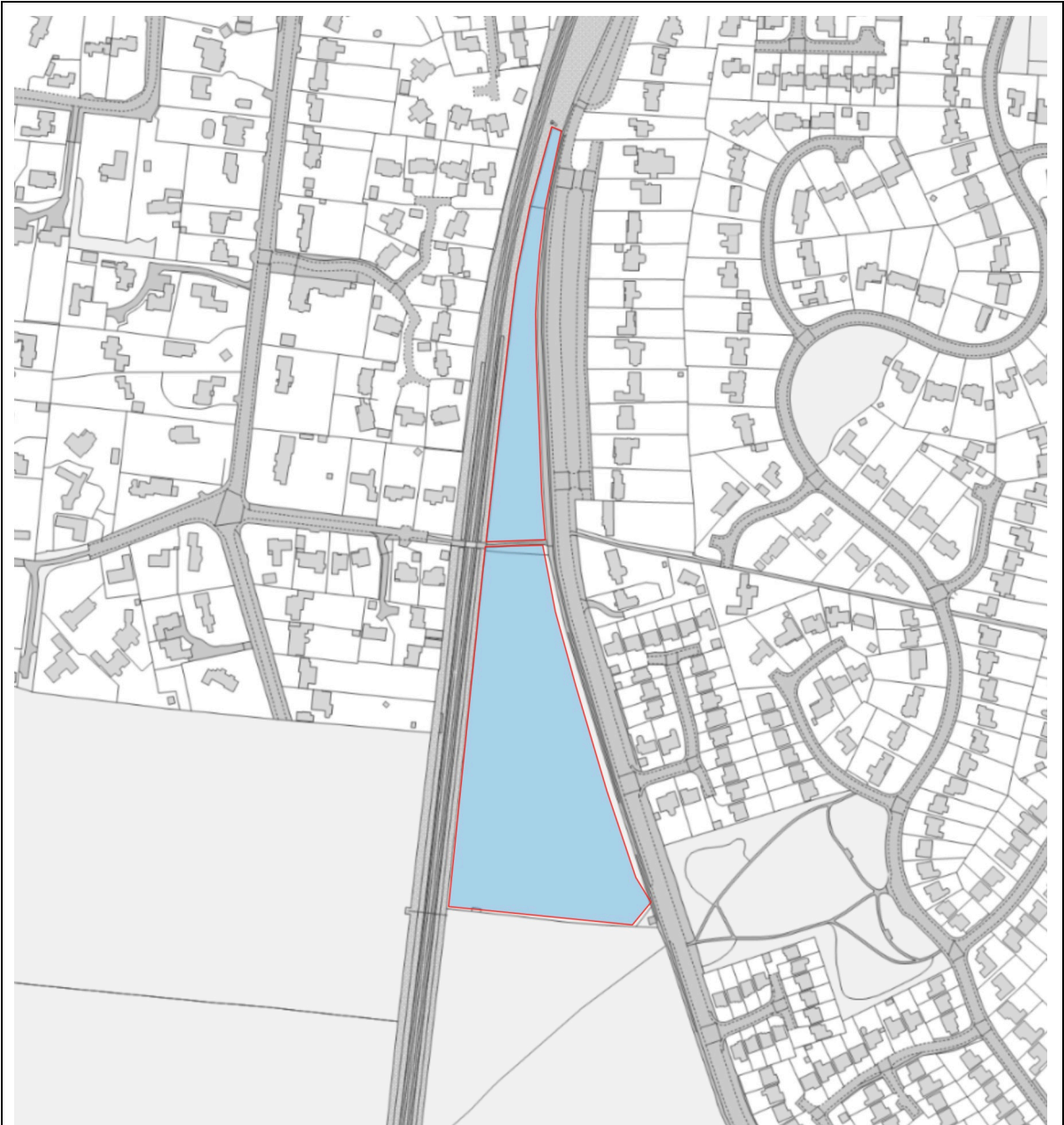


Figure 2. Call for Sites submission 10500

Little is known about the history and archaeology of the sites allocated on the Draft Local Plan although DUH207 and DUH209 seem to have been part of an oak woodland, perhaps a managed wood-pasture, referenced as *acleg* 'oak leigh' in a mid-tenth-century charter (James, 2014; 133–134; James 2017: 25–26). At that time, Worcester Lane was probably not in existence (James 2017: 26, Fig 8); it may not have come into use as main thoroughfare until several centuries later. The Right of Way leading into Quarry Park Road is likely a remnant of an ancient path which delineated the northern edge of *acleg* 'oak leigh'.

The earliest map showing this area is the Pedmore Tithe plan of 1846 (Figure 3).

Site DUH206 occupies the eastern edges of the fields Dean Field, Lower Heath Piece and Doe Bank. The name 'Dean Field' is almost certainly derived from the Old English word *denu* 'valley' (Gelling and Cole 2014: 113–122) referencing a stream valley here which leads northwards towards the pool in Peartree Drive (probably the pool named *stiran mere* in the aforementioned charter). 'Lower Heath Piece' probably refers to a field which, at the time of its naming, abutted heath-land to its west and northwest (James 2020a: 4). The origin of 'Doe Bank' is less clear but it may be a reference to deer which were kept in, or which frequented, that area.

Sites DUH207 and DUH 209 overlap with the fields named 'Fourteen Lands' and 'Upper and Lower Compton' on the Pedmore Tithe Plan. The former name probably refers to the number of medieval open-field selions which were enclosed when the 'Fourteen Lands' field was formed. The term 'Compton' in the latter field names probably refers to an Anglo Saxon settlement in the vicinity (James 2020b: 43–44), although this seems to have lain near the southern end of Ounty John Lane, some distance west of sites DUH207 and DUH209.

Dudley MBC's Historic Environment Record (HER) has only three entries in the immediate vicinity of sites DUH206, 207 and 209. These are reproduced in Figure 4 below and on subsequent pages.

There has been limited archaeological investigation of this area. Although little of note has been found so far, land to the south, east and west is rich in both prehistoric and later archaeology (James 2019: 8–13). It is not, therefore, implausible that more valuable archaeology remains within DUH206, 207 and 209. Indeed, Section 3.2.4 of the *Black Country Historic Landscape Characterisation Study* (Oxford Archaeology, 2020) acknowledges that '...less is known about the historic environment of the Green Belt areas' [within which sites DUH 206, 207 and 209 fall] and that '...the distribution of known archaeological sites within the HERs is unlikely to represent the true distribution of archaeological remains within the Black Country; instead it represents the distribution of previous archaeological investigation'.



Fig 4. Extract from Dudley's Historic Environment Record (kindly supplied by Mr Mark Mather, 2019) illustrating three recorded features in, and abutting, sites DUH206, DUH207 and DUH209.

HER Number **5886** - MDD1020 Site Name Site of Oxford,Worcester,Wolverhampton Railway Line.

HER Number	Site Name	Record Type
5886 - MDD1020	Site of Oxford,Worcester,Wolverhampton Railway Line.	Monument

Opened in Dudley 1850, not completed to Wolverhampton until 1853. Amalgamated with Great Western Railway 1860. Passenger line closed 6th Jan 1964.

Monument Types and Dates

RAILWAY (Post Medieval - 1800 AD to 1899 AD)
Evidence STRUCTURE

Description and Sources

Description

Nicknamed 'The Old Worse and Worse' this railway was incorporated in 1845 and opened in Dudley in 1850, (it was not completed to Wolverhampton till 1853). On 15th July 1860 it became part of the West Midland Railway and in 1860 was amalgamated with the GWR. The passenger line closed 6th Jan 1964 and the freightliner depot on 29th Sept 1987.<1><2>

It opened piecemeal, beginning with a small section near Worcester in October 1850, and it was over two years before it reached Dudley and then at first it was a single line and ran only from Brettell Lane, narrow gauge and restricted goods. It had no money and owned no locomotives or other vehicles. It existed by hiring contract engines that other companies had discarded. Engine failures and breakdowns were commonplace. Its later history included a famous disaster when 14 passengers were killed and 50 severely injured when on the 23rd August 1858 two trains on excursions from Worcester to Wolverhampton collided between Brettell Lane and Round Oak.<3>

Dudley Tunnel 1/2 a mile in length.<4>

As recorded in Canal Company Map in 1896.<6>

Sources

- (1) Bibliographic reference: Ned Williams. 1994. The Railways of Dudley.
- (2) Bibliographic reference: KM Beck. 1983. The West Midlands Lines of the GWR.
- (3) Monograph: VL Davies & H Hyde. 1970. Dudley and the Black Country 1760-1860.
- (4) Bibliographic reference: Michael Hale. 1995. The Oxford, Worcester and Wolverhampton Railway through the Black Country.
- (5) Bibliographic reference: Glynn Barratt, Laura Broughton. 2009. Midland Metro Phase 1 Extensions; Wednesbury to Brierley Hill Extension Archaeological Desk-based Assessment..
- (6) Unpublished document: British Waterways. Various. Documents held by British Waterways.

Associated resources - None recorded

Location

National Grid Reference

SO 91084 88387 (point) SO98NW

Administrative Areas

Borough	Dudley
County	West Midlands
Ward	Amblecote, Dudley, West Midlands
Ward	Brierley Hill, Dudley, West Midlands
Ward	Brockmoor & Pensnett, Dudley, West Midlands
Ward	Castle & Priory, Dudley, West Midlands
Ward	Coseley East, Dudley, West Midlands
Ward	Lye & Wollescote, Dudley, West Midlands
Ward	Netherton, Woodside & St Andrews, Dudley, West Midlands
Ward	Norton, Dudley, West Midlands
Ward	Pedmore & Stourbridge East, Dudley, West Midlands
Ward	St. Thomas's, Dudley, West Midlands

HER Number **6192** - MDD1039 Site Name Trehern's Farm; railway signal post.

HER Number	Site Name	Record Type
6192 - MDD1039	Trehern's Farm; railway signal post.	Monument

On the Oxford, Worcester and Wolverhampton Railway Line. (SMR5886)

Monument Types and Dates

SITE (Modern - 1901 AD to 2050 AD)
Evidence STRUCTURE

Description and Sources

Description

Signal post. <1>

Sources

(1) Map: Sites & Monuments Map - HWCC.

Associated resources - None recorded

Location

National Grid Reference

SO 90441 81431 (point) SO98SW

Administrative Areas

Historic County	Worcestershire
Historic Parish	Pedmore
Ward	Pedmore & Stourbridge East, Dudley, West Midlands

Address/Historic Names

Railway Signal Post, Trehern's Farm, Worcester Lane, Pedmore, West Midlands

Designations, Statuses and Scorings

Associated Designations - None recorded

Other Statuses and Cross-References

Sites & Monuments Record - **6192** Active

Ratings and Scorings - None recorded

Land Use

Associated Historic Landscape Character Records - None recorded

Other Land Classes

Landuse	Throughfare
---------	-------------

Related Monuments - None Recorded

Finds - None recorded

Associated Events/Activities - None recorded

Associated Individuals/Organisations - None recorded

HER Number 7091 - MDD1145 Site Name Pipeline Salvage Recording;Mesolithic/Modern Finds

HER Number	Site Name	Record Type
7091 - MDD1145	Pipeline Salvage Recording;Mesolithic/Modern Finds	Find Spot

Prehistoric flint flake. Post Med - Pottery (36), Shell(1), Bone(1), Clay Pipe(5),Tile(5). Salvage recording of pipeline across the southern part of the parish of Pedmore.

Monument Types and Dates

FINDSPOT (Mesolithic - 10000 BC to 4001 BC)
Evidence FIND

Description and Sources

Description

Prehistoric flint flake. Post Med - Pottery (36), Shell(1), Bone(1), Clay Pipe(5), Tile(5).<1> Salvage recording of pipeline across the southern part of the parish of Pedmore. <1>

Sources

- Bibliographic reference: Duncan Brown. 1992. Evaluation of the Kidderminster, Blakedown and Hagley Bypass..
- (1) Bibliographic reference: Robin Jackson & A Hancocks. 1996. SalvageRecording on the Frankley to Norton LinkMain.. Internal Report, 482..

Associated resources - None recorded

Location

National Grid Reference

SO 90534 81488 (point) SO98SW

Administrative Areas

Historic County Worcestershire
Historic Parish Pedmore
Ward Pedmore & Stourbridge East, Dudley, West Midlands

Address/Historic Names

Pipeline Salvage Recording, Hanging Stone Field, Pedmore, Stourbridge, West Midlands

Designations, Statuses and Scorings

Associated Designations - None recorded

Other Statuses and Cross-References

Sites & Monuments Record - 7091 Active

Ratings and Scorings - None recorded

Land Use

Associated Historic Landscape Character Records - None recorded

Other Land Classes

Geology L. Keuper sandstone
Landuse Disturbed grassland
Sub Soil Bromsgrove Ass

Related Monuments - None Recorded

Associated Finds

FDD42 ASSEMBLAGE (>10) (Mesolithic - 10000 BC to 4001 BC) FLINT

Associated Events/Activities

MonFullRpt

Report generated by HBSMR from exeGesIS SDM Ltd

Page 598

Appendix: A note on hedgerows

The hedgerow abutting Worcester Lane has been noted in James (2021: 10–12), being included as hedge #40 in Plan 04 and the subsequent table.

This hedge-line was first recorded on the Pedmore Tithe plan in 1842, but it may be older. There is no known historic basis for it to be classed as an 'Important' hedgerow under the *Hedgerows Regulations* 1997. It may qualify as 'Important' under the Regulations' 'Wildlife and Landscape' criteria, but a detailed survey of the hedge's flora and fauna would be required to ascertain whether this is the case.

References

- Gelling, M and Cole, A (2014) *The Landscape of Place-Names*, Shaun Tyas, Donington.
- James, K. (2014) 'The Swinford Charter (S579): A More Complex Origin for Oldswinford?', *Transactions of the Worcestershire Archaeological Society* **24**. Copy accessible at [http://local.kjwebs.co.uk/Swinford Charter TWAS2014 Optimized.pdf](http://local.kjwebs.co.uk/Swinford%20Charter%20TWAS2014%20Optimized.pdf).
- James, K. (2017) The Swinford Charter (S579) of AD 951–9: A new interpretation of the boundary clause and thoughts on the origin of Oldswinford and Pedmore parishes
<[http://www.swinfordcharter.kjdocs.co.uk/Swinford Charter AD 951-9 rev 17 07 17 Optimised.pdf](http://www.swinfordcharter.kjdocs.co.uk/Swinford%20Charter%20AD%20951-9%20rev%2017%2007%2017%20Optimised.pdf) >
- James, K. (2019) *The Historical Landscape of Stourbridge's Green Belt*,
<[http://www.sgb.kjdocs.co.uk/Historical Landscape of Stourbridges Green Belt 01c.pdf](http://www.sgb.kjdocs.co.uk/Historical%20Landscape%20of%20Stourbridges%20Green%20Belt%2001c.pdf)>
- James, K. (2020a) *Stourbridge's Ancient Heathland* <[http://www.sgb.kjdocs.co.uk/Stourbridges Ancient Heathland 01b.pdf](http://www.sgb.kjdocs.co.uk/Stourbridges%20Ancient%20Heathland%2001b.pdf)>.
- James, K. (2020b) 'Windsor, windofer and Iverley: Illustrating the place-name element *ofer within the Anglo-Saxon road network'. *Journal of the English Place-Name Society*, **51**, 37–64. Copy accessible at <[http://local.kjwebs.co.uk/James JEPNS 51 offp.pdf](http://local.kjwebs.co.uk/James%20JEPNS%2051%20offp.pdf)>.
- James, K. (2021) *Hedgerows Regulations: An Overview of their Applicability in 'Call for Sites' Areas near Stourbridge*. Unpublished report (contact author at dr.kjames@yahoo.com to request a copy).
- Mather, M. (2014, 2019) Pers. comm.
- Oxford Archaeology Ltd. (2020) *Black Country Historic Landscape Characterisation Study, Final Report, Issue 2*, <https://blackcountryplan.dudley.gov.uk/media/13895/comp_black-country-hlc-final-report-30-10-2019-lr_redacted.pdf>.
- Tithe Commissioners (1846) *Pedmore Tithe Plan*, Worcestershire Record Office, r760/508 BA 1572 .